

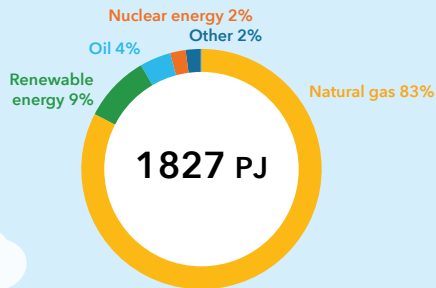
ENERGY IN THE NETHERLANDS

SUPPLY

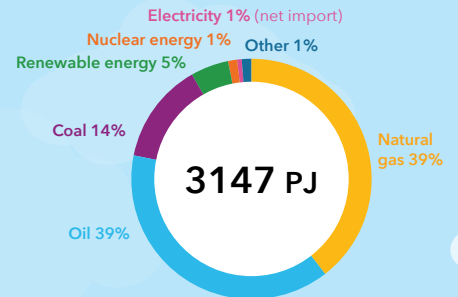
DEMAND

Energy is a basic need and everyone uses it. It is produced from various sources and transported to end customers, often converted into power or heat. Supply has to match energy demand every single day. Energy makes sure the lights go on, houses are heated and hot water is available, it powers cars and ships and is ubiquitous in our daily lives. The production and use of fossil fuels causes emissions of greenhouse gases. This infographic shows the Dutch energy system and its greenhouse gas emissions. We hope this information will provide the basis for good discussion. More information can be found on www.energieinederland.nl.

Energy production



Primary energy demand



2018

Oil refining
11 Mton

Power production companies¹⁾
52 Mton
(allocated to sectors)

Gas and oil production
2 Mton

Total
197
Mton CO₂-eq

Services, Waste & Water
28 Mton
(11 Mton direct)

Other greenhouse gases
(CH₄, N₂O, F-Gases)
29 Mton

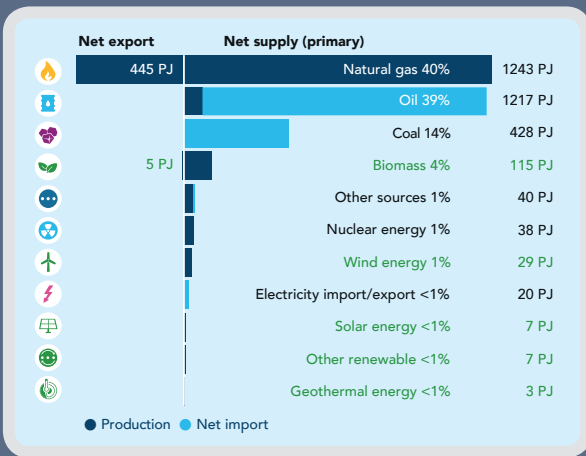
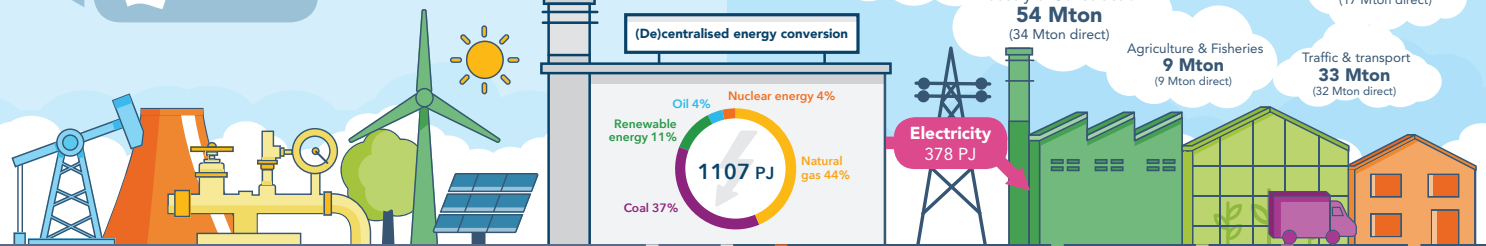
Households
31 Mton
(17 Mton direct)

Industry & Construction
54 Mton
(34 Mton direct)

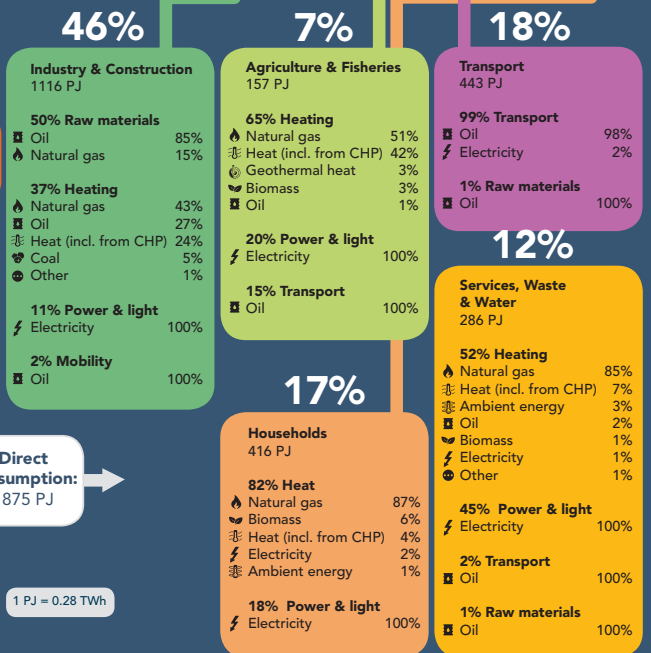
Agriculture & Fisheries
9 Mton
(9 Mton direct)

Traffic & transport
33 Mton
(32 Mton direct)

International transport:
685 PJ



Final consumption



For energy conversion:
1107 PJ

Direct:
2040 PJ

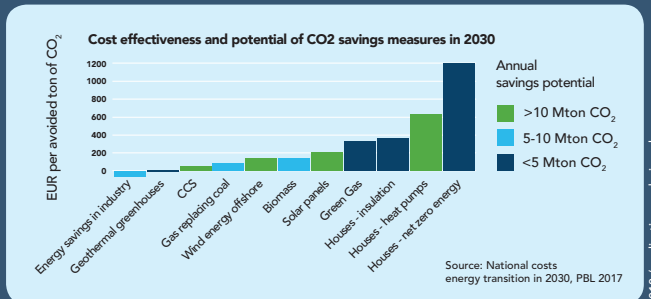
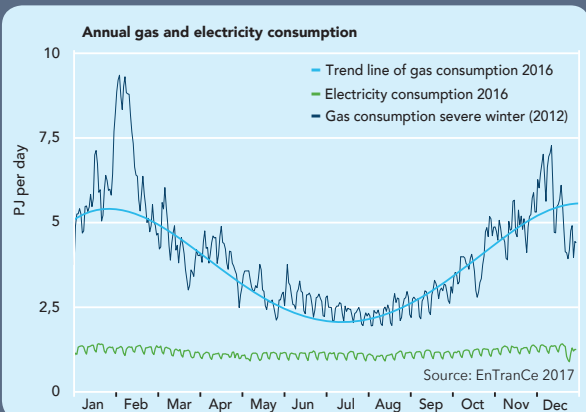
Direct consumption:
1875 PJ

Losses:
729 PJ

1 PJ = 0.28 TWh

energie
in
nederland.nl

ebn



¹⁾ Emission Electricity generation companies allocated to end-use sectors based on EBN analysis. For an explanation, datasets and disclaimer see www.energieinederland.nl. Source: CBS unless otherwise indicated. Reporting year 2016.